

MIDTOWN VICTORIAN WITH LOTS OF POTENTIAL

Asking Price: \$595,000

1917 Chestnut Street, Alameda, CA 94501



Midtown 2-bedroom, 1-bath Victorian with excellent curb appeal and lots of potential featuring an oversized covered front porch, large foyer, an open floor plan for the living room and dining room with fireplace, large kitchen, tall ceilings, bay windows, and wood pocket doors. Full 7+' tall unfinished basement. Concrete foundation. Central Heat. Off-street tandem parking for 2 cars. Near Alameda Marina.

1,185 Sq.Ft. Living Area.

4,104 Sq.Ft. Lot Size.

Circa 1894.

Floor Plan on the reverse side

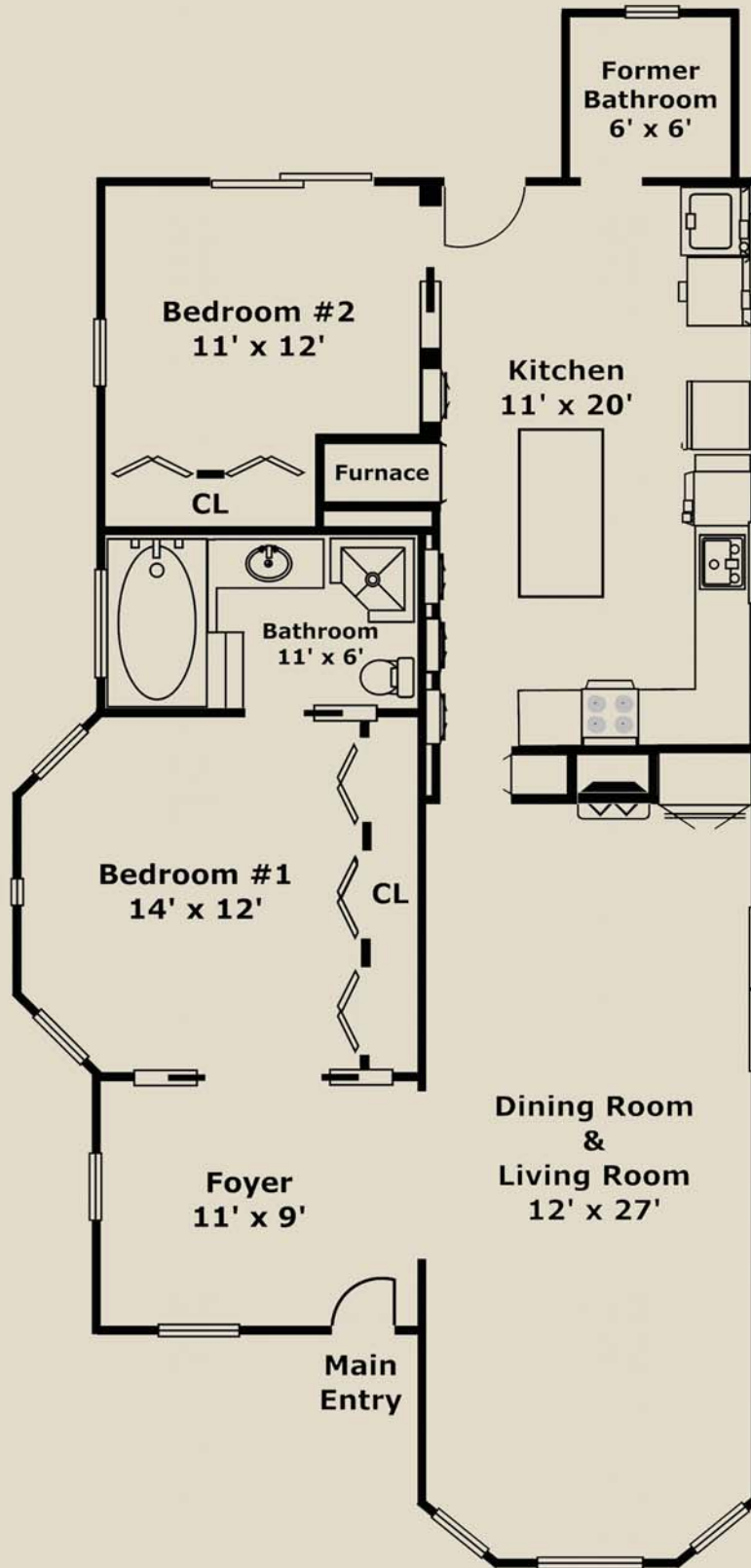
www.Panavista.com/1917Chestnut

Broker: Ramesh
Ramesh@Panavista.com



(510) 523-0707
PANAVISTA REALTY
2503 Lincoln Avenue, Alameda

FLOOR PLAN FOR 1917 CHESTNUT STREET, ALAMEDA



Layout and all measurements are approximate, and not guaranteed to be either exact or to scale.